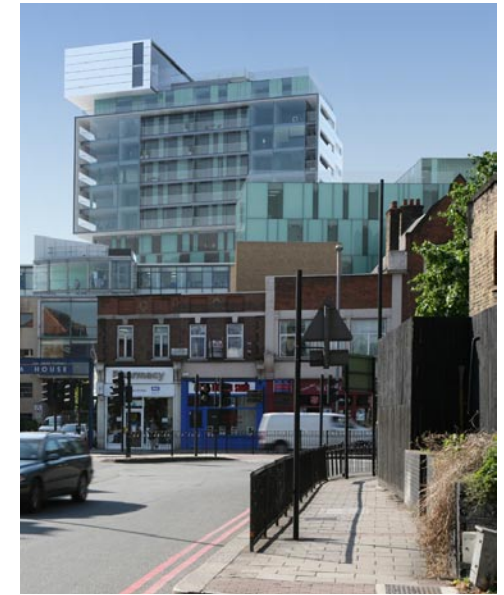
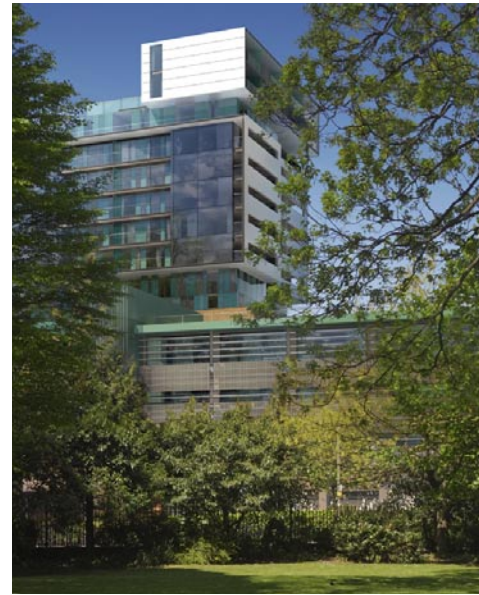
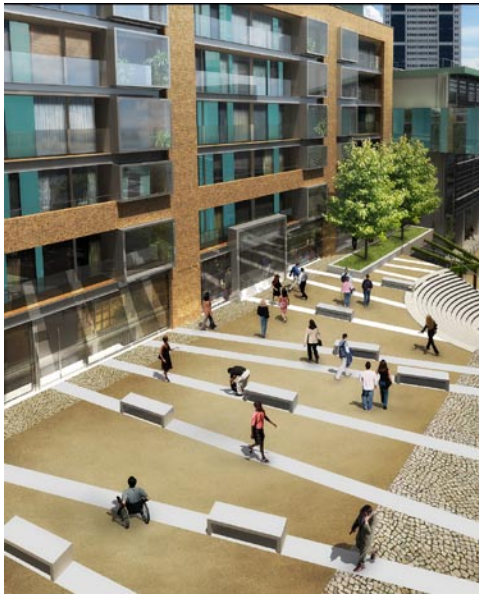


Projects



Wandsworth Business Village London SW18

Client	Workspace Glebe
Size	209 units
Value	£50 million
RSL	Octavia Housing
Status	Planning permission March 2008

This high density mixed-use development is situated adjacent to Wandsworth Town Centre and incorporates a c.10,000m² Business Centre (Class B1), 209 residential units (of which 53 are affordable) within a 16 storey tower, retail/café/restaurant space, a crèche, new public open space and new pedestrian links through to the town centre and adjoining King George's Park. The scheme has won widespread support from both the London Borough of Wandsworth and the GLA.

Wandsworth Business Village was designed from the outset to be a low carbon project. The mixed use scheme utilises a site wide energy plant fired by gas and ground source heat pumps. The compact nature of the scheme, high levels of insulation and natural ventilation, including in the office areas, make for a highly efficient low energy solution. The scheme has achieved a BREEAM 'Very Good' rating and Code for Sustainable Homes Level 3.