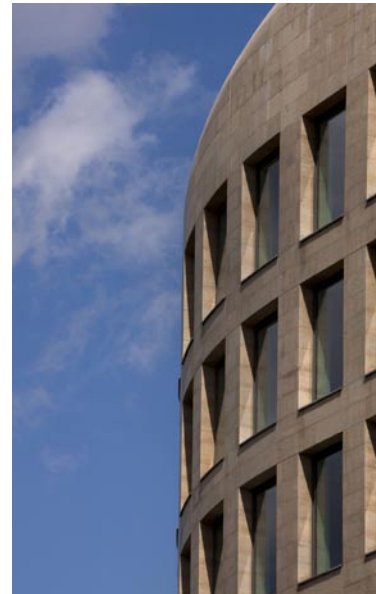


# Projects



## 40 Holborn Viaduct London EC1

Client      Castlemore Securities  
Size        235,000ft<sup>2</sup>  
Value      £45 million  
Contract   Design & Build  
Status     Completed August 2008

Rolfe Judd's redevelopment of the former De Beers headquarters provides a landmark office building of some 235,000ft<sup>2</sup>. The scheme comprises a 12-storey building, including three basement levels, with retail at ground level and a new landscaped civic space facing on to Holborn Circus.