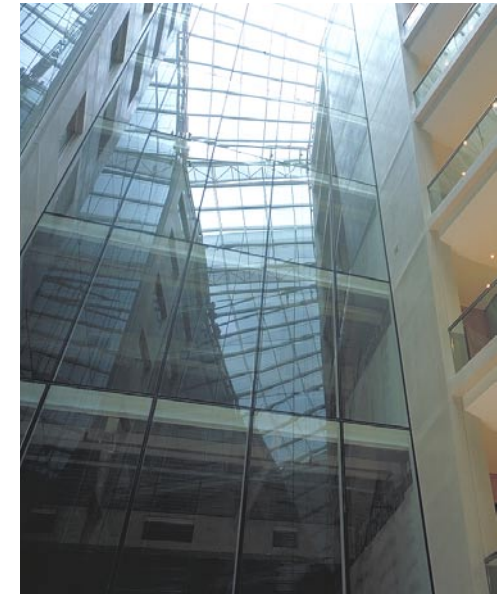
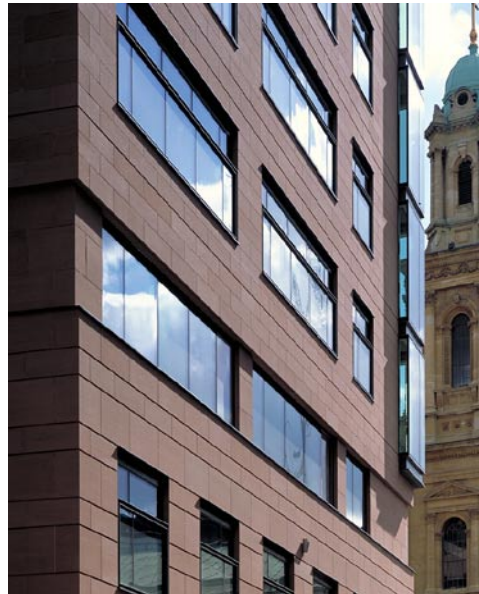


# Projects



## Atlantic House 45-50 Holborn Viaduct London EC1

Client Prudential Property Investment Managers Ltd  
Tenant Lovells  
Size 35,000m<sup>2</sup>  
Value £45 million  
Contract JCT with Contractor Design Portions and Bill of Quantities  
Status Completed July 2001

Rolfe Judd's new building for a leading City law firm provides a landmark for this prominent island site, bounded by Holborn Viaduct and Farringdon Street. A contemporary architecture of sandstone, metal and glass was created through the careful composition of detail and material. The form of the building was developed to respond to the planning brief involving the recreation of a Victorian Gate House, which was destroyed in the Blitz.

Atlantic House received a Commendation in the 2002 Civic Trust Awards.

**Rolfe Judd**

[www.rolfe-judd.co.uk](http://www.rolfe-judd.co.uk)