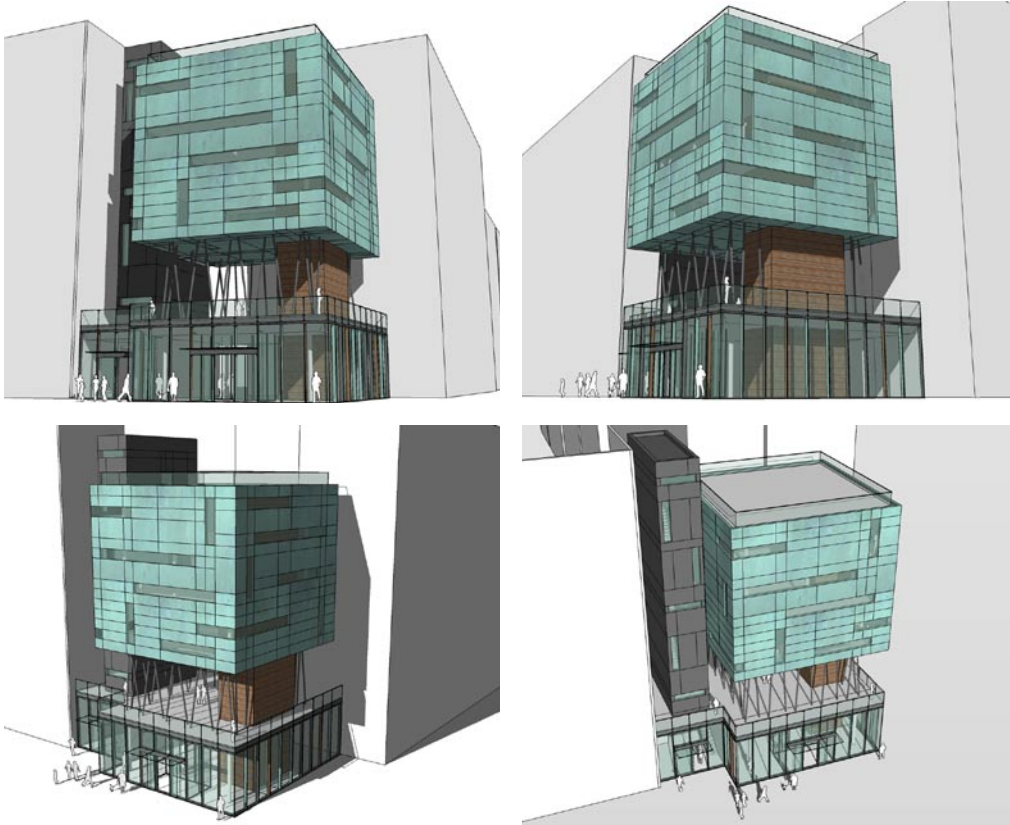


**Art Gallery Hayes**



The art gallery or 'lifebox' as it is known forms part of the mixed-use Hayes development. The concept was to introduce art into the Hayes scheme both in the form of the gallery and in features throughout project. The objective was to help provide the site with an artistic focus as well as adding objects of interest.

The gallery itself is a flexible series of spaces located on the most prominent corner of the scheme over 3 floors. Internally, the spaces can be used for exhibitions, performance or classes. Externally, the building is formed as an enigmatic copper cube with random slot windows cut into the cube on the four elevations and the base. The cube is elegantly supported in the air, one clean floor above the scheme's Hotel reception with elegant columns.

Access is gained via a ground level reception. The stair and lift housed above create a separate vertical element forming the 'foil' to the cube.

**Client**            Domaine Developments / Ballymore Properties  
**Size**                 300m<sup>2</sup>  
**Contract**          Construction Management  
**Status**             Commenced on site January 2007, due for completion December 2009