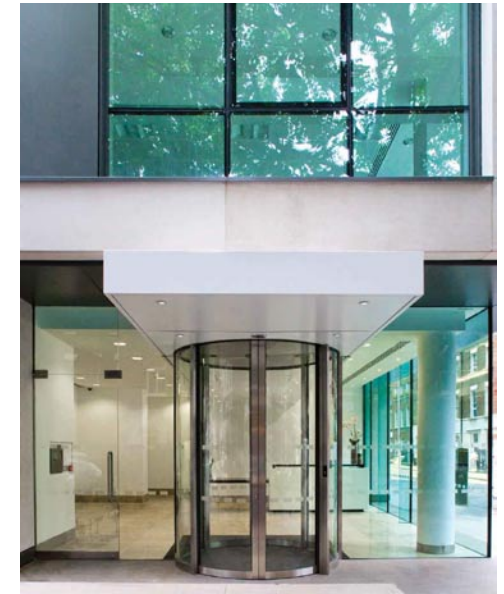


# Projects



## 60 Charlotte Street London W1

Client PPG Metro / Greenhall Estates  
Size 44,000ft<sup>2</sup>  
Value £10.5 million  
Status Completed October 2008

This project involved the reclad and redevelopment of a particularly tired and undervalued 9 storey 1970s office building, formerly the Channel 4 headquarters, within the Fitzrovia area of Central London. The building will be transformed into a modern office development with extensions at the second and seventh floor not only expanding the lettable area but greatly improving the exterior appearance of the building allowing it sit more comfortably within its Conservation Area surroundings without disappearing from view.

Within the development of this project planning permission was gained for the transformation of the basement area, once the recording studio for Channel 4, into a large restaurant area. Design and development of this space is currently ongoing.