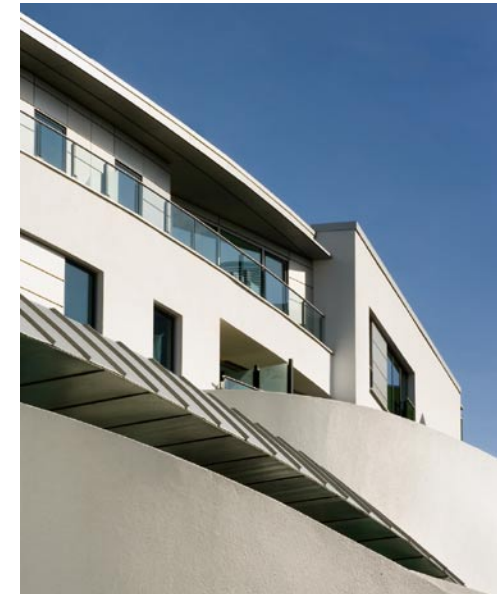


# Projects



## Tabard Square London SE1

Client	Berkeley Homes (North East London) Ltd
RSL	Southern Housing Group
Size	572 units (of which 212 are affordable under various tenures: shared ownership; rented; and key worker)
Value	Approximately £75 million
Status	Completed Spring 2007

Tabard Square is an urban regeneration residentially led development. It provides 572 apartments of which 212 are affordable. At its heart it provides London with a new public square accessible to all, with a mix of uses at ground level encouraging city life and vitality. Gym, crèche, supermarket, retail, and office uses surround the square with a sculptural restaurant acting as the central focus. A residential tower in the north west corner of the square is the landmark for the development and a beacon for regeneration for the Borough area.

The quality of the finished development has been recognized through the winning of a number of awards including Housing Design Awards – Overall Winner 2007, and receipt of a CABE Gold Standard Award in 2007. The project was also the winner of the Building Awards – Major Housing Project of the Year 2007.