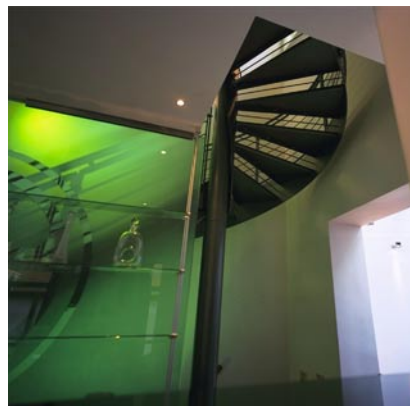
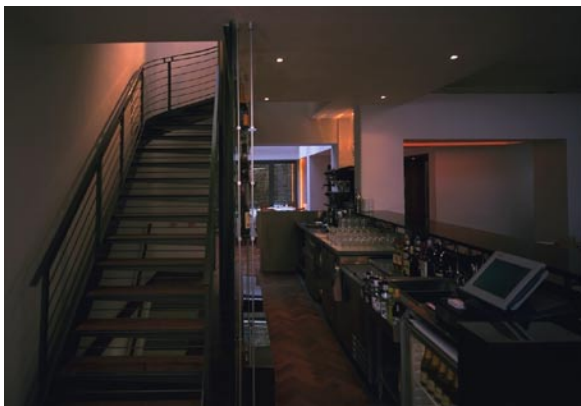


Rolfe Judd: Spec Sheet

**Brompton Bay** 94-96 Draycott Avenue London SW3



Mixed use development in Chelsea. Conversion of former pub into a stylish new restaurant and self contained duplex apartment.

Rolfe Judd was commissioned to deliver a full design service extending to the design of the graphics and selection of furnishings. The architectural concept of the restaurant creates two distinct dining rooms each with its own atmosphere.

<b>Client</b>	Zagros Corporation Ltd
<b>Value</b>	£700,000
<b>Contract</b>	IFC 84
<b>Status</b>	Completed December 1998